

HARTLEY VALE

THE STATION AND THE TRAMWAY



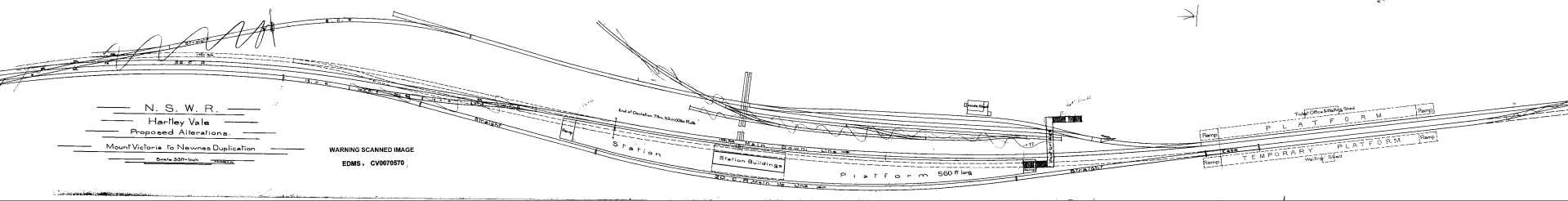












N. S. W. R.
Hartley Vale
Proposed Alterations.
Mount Victoria to Newnes Duplication
Scale 3/4" = 1"

WARNING SCANNED IMAGE
EDMS. CV0076570







This is the Plan of +
 Drawing marked N^o. 1, referred
 to in our Bonds to the
 Commissioners for Railways
 dated the 1st day
 of September 1855

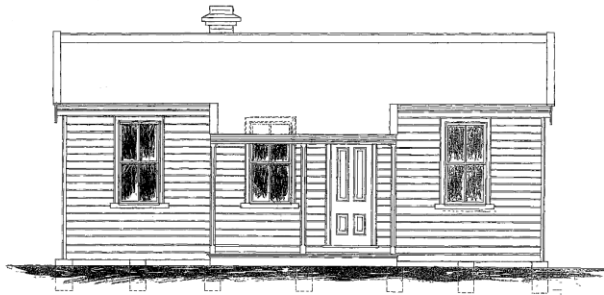
Witness my hand
 at London the 1st day of
 September 1855
 Wm Taylor
 Address { W. M. ... Thomas Taylor

G. W. R.

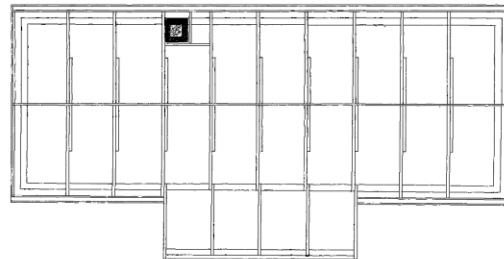
HOUSE FOR OFFICER IN CHARGE

HARTLEY VALE

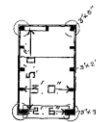
George ...
 24th May 1855



— FRONT ELEVATION —



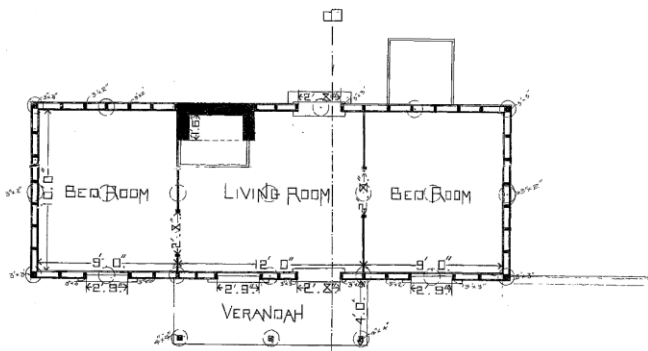
— ROOF PLAN —



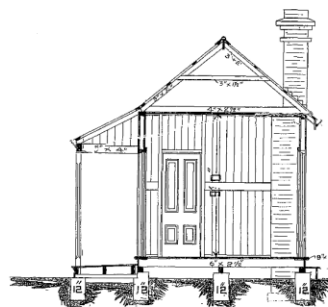
— PLAN —



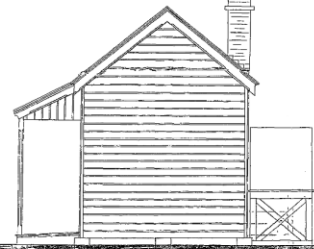
— SECTION — ELEVATION



— GROUND PLAN —



— SECTION A. B —



— END ELEVATION —

— SCALE 8 FEET TO 1 INCH —

